



**£130,000**  
**Grand Avenue**  
Worthing, BN11 5AL



## PROPERTY SUMMARY

Being sold via Secure Sale online bidding. Terms & Conditions apply. Starting Bid £130,000.

Nestled on the picturesque Grand Avenue in Worthing, this charming one-bedroom flat offers a delightful coastal living experience.

One of the standout features of this property is its stunning sea views, allowing you to enjoy the beauty of the coastline from the comfort of your home. Situated on the fourth floor, the apartment benefits from lift access to all floors, ensuring ease of movement for all residents.

This property is ideal for those seeking a tranquil seaside lifestyle, with the vibrant amenities of Worthing just a stone's throw away. Whether you are looking for a permanent residence or an investment opportunity, this flat on Grand Avenue presents a wonderful opportunity to embrace the charm of coastal living.

Leasehold - 80 Years Remaining

Maintenance - £700 per quarter

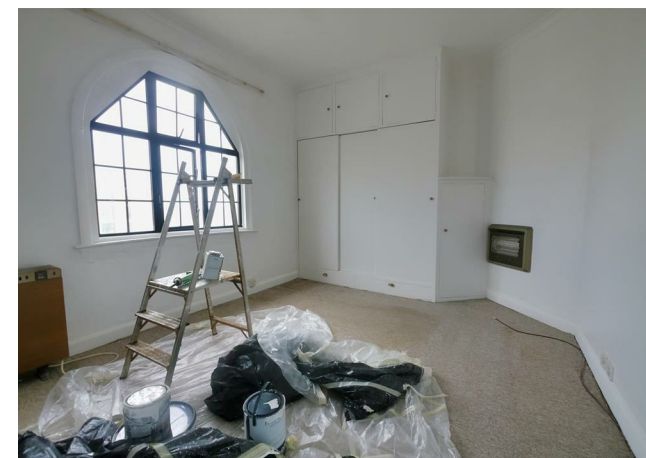
1



1



1



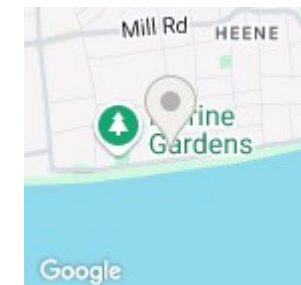
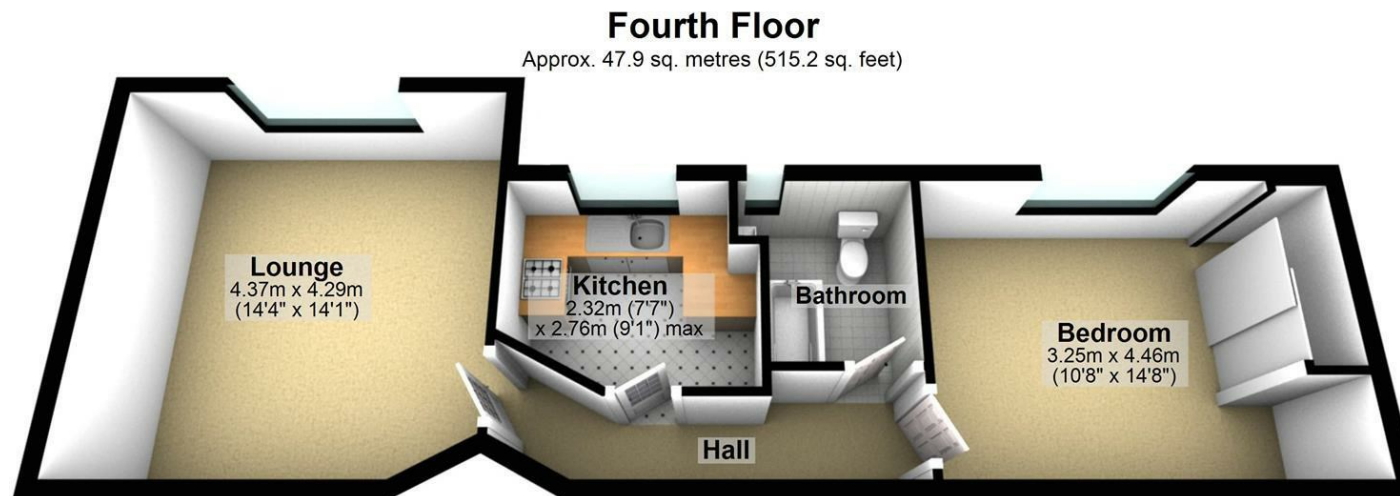


LOCAL AUTHORITY

TENURE  
Leasehold

COUNCIL TAX BAND  
A

VIEWINGS  
By prior appointment only



Energy Efficiency Rating		
	Current	Potential
Very energy efficient - lower running costs		
(92 plus) <b>A</b>		
(81-91) <b>B</b>		
(69-80) <b>C</b>		78
(55-68) <b>D</b>		
(39-54) <b>E</b>	56	
(21-38) <b>F</b>		
(1-20) <b>G</b>		
Not energy efficient - higher running costs		
England & Wales	EU Directive 2002/91/EC	

Total area: approx. 47.9 sq. metres (515.2 sq. feet)

Agents Note: Whilst every care has been taken to prepare these particulars, they are for guidance purposes only. All measurements are approximate and are for general guidance purposes only and whilst every care has been taken to ensure their accuracy, they should not be relied upon and potential buyers/tenants are advised to recheck the measurements



OFFICE ADDRESS  
22 South Farm Road  
Worthing  
West Sussex  
BN14 7AA

OFFICE DETAILS  
01903 532225  
worthing@localagent.co.uk  
www.openhouseworthing.co.uk